



# PYN AUTOCOMP PVT. LTD.

[www.pyn.in](http://www.pyn.in)

**Aditya Pittie**

M.S./MBA - MIT (USA)

B.S.Engg - Univ. of Mich. (USA)

**Managing Director**

**[apittie@pyn.in](mailto:apittie@pyn.in)**

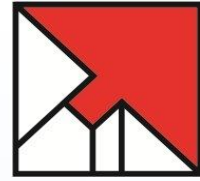
---

# We are now IATF Registered Company

IATF 16949:2016  
Quality Management System

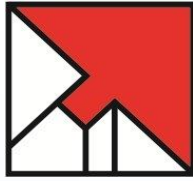


International Automotive Task Force



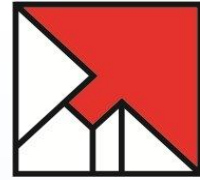
# About Us

- PYN is a precision component machining and manufacturing company based in India.
- PYN has extensive experience in the **Automotive and Engineering components business**.
- PYN has established customers such as **Carraro, American Axle, Daimler India Commercial Vehicles, Neosym, Mahindra CIE, Forbes Marshall Group**, etc.
- Our core skill-set is in manufacturing and machining precision components as well as in new product/component development with the highest quality standards.



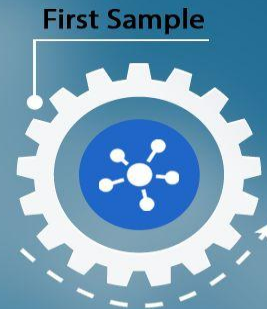
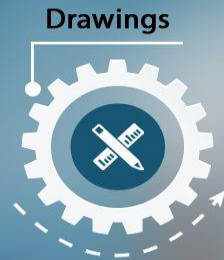
# Overview

- Facility in Pune, India for manufacturing precision machined components for Automotive and Engineering Industries.
- Focus on Axle and Transmission components for Commercial Vehicles and Off-Highway applications.
- IATF 16949:2016 Quality Management System certified by BSI.
- Strength in rapid development and productionisation of components due to extensive experience and knowledge.
- Providing one-stop and end-to-end machining solutions to our customers.



# Differentiator

Our differentiator is in the production and reliable supply of complex machined components with highest quality and zero defects at low cost due to stringent quality processes and production systems, low in-house rejection rate, high productivity and machine utilisation and stringent cost control of all inputs.



# Quality Standards

- IATF 16949:2016 certified by BSI
- High quality consistency
- Zero rejections at customer end
- Near-perfect repeatability of close tolerances
- Use of tools such as APQP, PPAP etc.
- Robust and well-established processes and systems are well integrated within our work practices eg. Kaizen, Poka Yoke, value stream mapping, root cause analysis, 5 whys? Etc.



# Quality Policy

**High Quality translates to fewer customer rejections and hence to lower costs, on-time deliveries & increased customer satisfaction.**

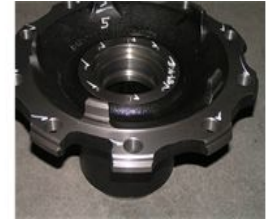
**We are committed to meeting and exceeding customer expectations of products and services through highest quality, on-time delivery and zero defects while maintaining the highest standards of fairness, integrity, transparency, trust, safety and morale to emerge as a leading precision component manufacturer.**

## **OBJECTIVES:**

- **Zero defects**
- **On-time delivery**
- **Improvement in customer satisfaction level**

## Axle and Transmission

- Planetary carrier gear housing
- Epicyclic carrier
- Backing plate
- Flange
- Wheel hub
- Differential carrier
- Rear axle brackets





## Passenger Car HVAC

- Tube Connectors
- Compressor mounting brackets



## Engineering

- Flow meter housing



## Engine

- Flywheel



# Customer Value Proposition

- **Experience** – we form steady, long-term customer relationships so that we are closely integrated into their supply chain.
- **Dependability** – we commit to and achieve customer's stringent delivery schedules.
- **Flexibility** – we respond to changing product and schedule demands quickly and proactively.
- **Responsiveness** – we provide updated and transparent information regarding orders thereby becoming an extension of the customer's supply chain and quality dept.
- **Expertise** – we help customer's improve their efficiency and manufacturability by offering our extensive experience and knowledge on component design and manufacturing process.

# Customer Value Proposition



Our greatest strength is our customer oriented approach & our ability to understand customer needs & our ability to reliably deliver unsurpassed quality and cost effective products & services to our customer's through:

- State-of-the-art Manufacturing Capability – spare capacity available as well as option for setting-up new dedicated capacity.
- World Class Technology.
- Full Service Supply Capability.
- Wide product profile
- 'Speed to Market'
- Cost efficiency
- Comprehensive engineering and product development capability

**PYN is the RIGHT PARTNER !**

## Automotive

- Carraro India
- American Axle
- Daimler India Commercial Vehicles
- Mahindra CIE
- Neosym

## Engineering

- Krohne Marshall

DAIMLER  CARRARO

neosym



Mahindra  
Rise.



# Strengths



- Highest quality standards with proven and long established track record of supplying critical line items to our customers with Zero PPM.
- Internal machining standards are maintained at half tolerance of all specifications thereby leading to high Cp/CpK
- Stringent inspection and QA
- Robust backward integration of our supply-chain
- Rapid development to delivery with reduced time and cost
- Impeccable reputation and long term relationship with all our stakeholders
- Stable and growing business from global OEM's



# Growth Drivers



1. We are looking to rapidly expand and cater to new business from the auto and engineering majors as well as for exports.
2. We have adequate financial and technical strengths to expand and cater to new business.
3. We are also actively looking at setting-up facilities for new product lines and assemblies.

## Plans:

- Expansion of existing **product lines**: axles, transmission, powertrain
- Forward integration into **assemblies, systems**
- Expand customer base in same verticals
- Acquisitions in India and abroad
- Technology-led growth through **foreign collaborations, JV's**
- Target adjacent businesses eg Agriculture, LCV, Passenger Cars
- Export of products and assemblies.
- And more...

- **Fairness**
- **Integrity**



- **Transparency**
- **Trust**

OUR PURPOSE  
AND VALUES

# New Capabilities & Technologies

- Industry 4.0
- IoT
- Online OEE, Breakdown, SPC, Cp, Cpk
- AI Image Processing
- HMC
- 4th Axis

## INDUSTRY4.0



AUTOMATION



CONNECTION



CLOUD COMPUTING



IOT

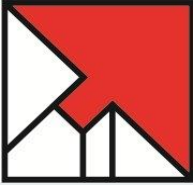


BIG DATA



SYSTEM INTEGRATION





**PYN AUTOCOMP PVT. LTD.**



**Address - Gat No. 193-196, Sanaswadi,  
Pune - 412208, India  
Mob - +91-7414962376, +91 -  
7774065667  
[www.pyn.in](http://www.pyn.in)**